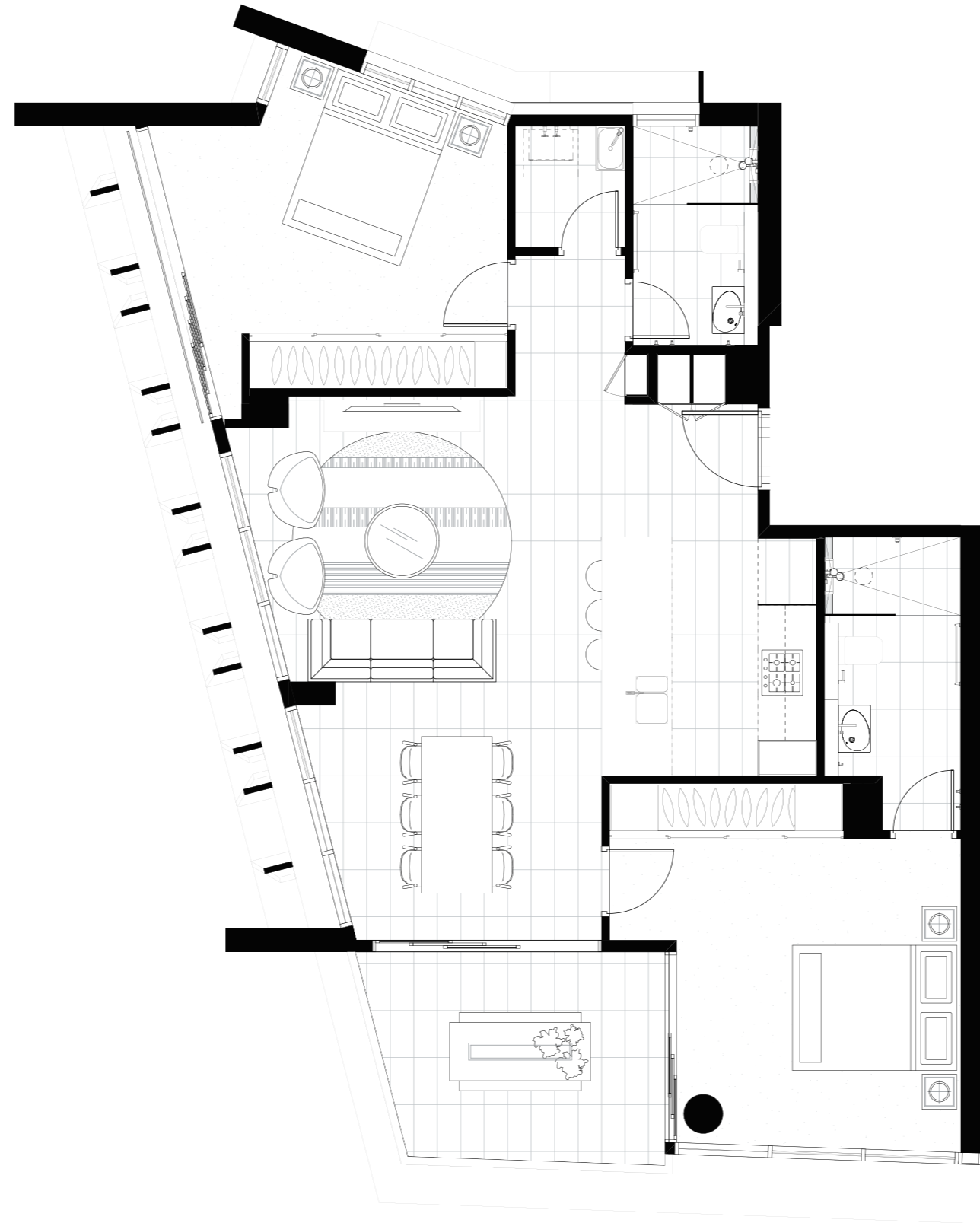




# Northcliffe

RESIDENCES

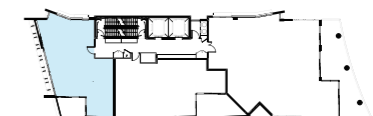


0 0.5 1 1.5 2 2.5 3 3.5 4 4.5

## DESIGNER APARTMENTS, UNIT G. LEVELS 11-20

### 2 BEDROOM

INTERNAL	97 SQM
EXTERNAL	11 SQM
TOTAL	108 SQM



DEVELOPED BY  
**Mii**  
PROPERTY



### ENTRY/LIVING/DINING

Floors:	Standard: 300x600mm Fully Rectified tile Upgrade Option: Engineered timber flooring
Walls:	Washable low sheen acrylic paint on set plasterboard
Skirting:	Painted square edge skirting
Ceilings:	Flat acrylic paint on plasterboard with square set cornice
Entry Doors:	Timber veneer
Other Doors:	Semi-gloss acrylic paint
Lighting:	Down lights

### KITCHEN

Floors:	Standard: 300x600mm Fully rectified tile Upgrade option: Engineered timber flooring
Walls:	Washable low sheen acrylic paint on set plasterboard
Ceilings & Bulkheads:	Flat acrylic paint on set plasterboard with square set cornice
Bench Tops:	Reconstituted stone
Splash Back:	Porcelain panel
Cupboard doors:	Prefinished moisture resistant doors
Carcasses:	Moisture resistant melamine
Cupboard handles:	Recessed shadow line and handles
Kickboard:	Moisture resistant board
Lighting:	Down lights generally
Sink:	1 + 1/3 bowl undermount stainless steel sink
Mixer:	Chrome mixer tap
Cook top:	Bosch 60cm wide gas cooktop
Oven:	Bosch 60cm wide electric oven
Range hood:	Bosch 60cm wide built-in recirculating range hood
Dishwasher:	Bosch 60cm wide dishwasher semi integrated
Microwave Oven:	Space provided with single power point
Fridge/Freezer:	Space provided with single power point
Pantry:	Joinery cupboard
Hinges & Drawer Runners:	Soft close

### BEDROOMS & ROBES

Floors:	Broadloom carpet 100% wool
Walls:	Washable low sheen acrylic paint on set plasterboard
Ceilings:	Flat acrylic paint on plasterboard with square set cornice
Doors:	Semi-gloss acrylic paint
Built in Robe:	Generally: Sliding mirror doors with melamine internals and hanging rail Unit Type F: Walk in robe to master bedroom
Lighting:	Down lights

### BATHROOM & ENSUITE

Floors:	300x600mm Fully rectified tile
Walls:	300x600mm Glazed ceramic tile
Ceilings:	Flat acrylic paint on set plasterboard with square set cornice
Doors:	Semi-gloss acrylic paint
Upstand benchtop:	Reconstituted stone
Upstand face:	Fully rectified tile
Storage:	Overhead mirrored cabinets
Lighting:	Down lights
Basin:	Wall mounted porcelain basin
Basin mixer:	Wall mounted mixer and spout, Chrome
Toilet:	Dual flush, concealed cistern toilet
Shower screen:	Frameless glass
Shower tapware:	Mixer with diverter, Chrome
Shower type:	Rail shower & ceiling mounted shower, Chrome
Accessories:	Toilet roll holder, robe hook, towel rail, towel hook and shower shelf

### LAUNDRY

Floors:	300x600mm Fully rectified tile
Walls:	Washable low sheen acrylic paint on set plasterboard with glazed ceramic wall tiles to splashback and skirting
Ceiling:	Flat acrylic paint on set plasterboard with square set cornice
Doors:	Bi-folding moisture resistant melamine doors generally Unit Type G: Single door, semi-gloss acrylic paint
Laundry tub:	Steel tub and cabinet
Laundry tapware:	Chrome mixer tap
Dryer:	Wall mounted tumble dryer
Lighting:	Downlight

### BALCONY/TERRACE

Floors:	300x600mm Fully rectified tile
Ceiling:	Texture painted concrete soffit
Lighting:	Surface mounted lights